

SCOTT &
STAPLETON

NEWINGTON AVENUE
Southend-On-Sea, SS2 4SD
£1,750 PCM





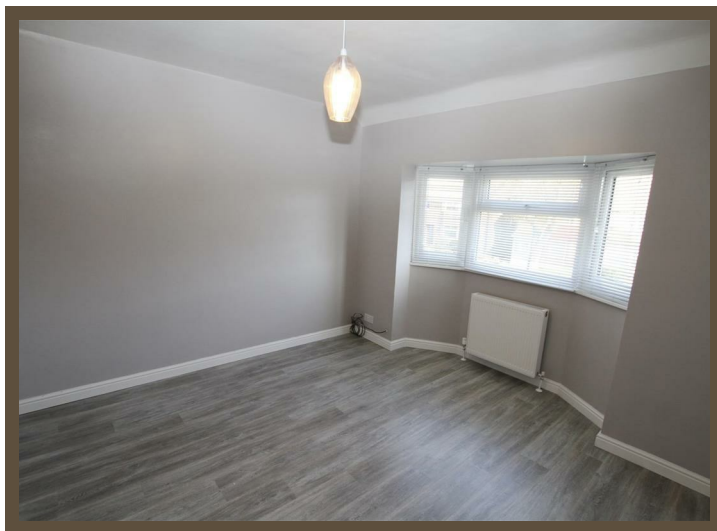
NEWINGTON AVENUE

SOUTHEND-ON-SEA, SS2 4SD

£1,750

pcm

Scott & Stapleton are delighted to offer this beautifully presented and recently refurbished three bedroom family home with off street parking for up to three cars, attractive west backing rear garden with brick built storage shed, large kitchen diner, living room, modern family bathroom, two double bedrooms and further single/ study. Situated in a popular location, this semi-detached home is situated in a vibrant community, close to local amenities, schools, and transport links, making it an ideal choice for those seeking a balanced lifestyle. Available unfurnished & end of November.



- Porch
- Entrance hallway
- Living room
- Kitchen diner
- Landing
- Master bedroom
- Bedroom two
- Bedroom three
2.159 x 1.876 (7'0" x 6'1")
- Bathroom
- Rear garden
- Off street parking to front

